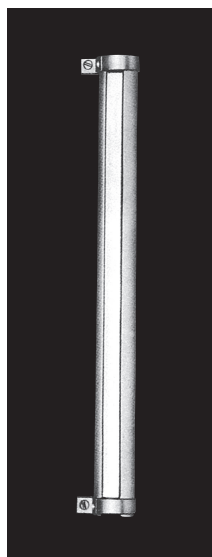


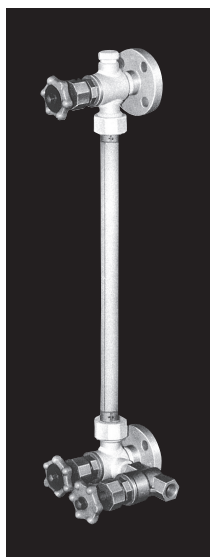
# DAIDO

## TUBULAR<sub>TYPE</sub>

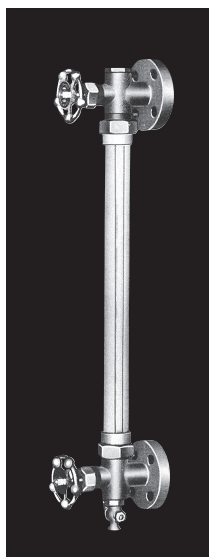
Tubular type level gauge is the simplest in structure and the most widely used. It is used at pressure of 5Kgf/cm<sup>2</sup> (5barG) and below. Ball check valve for emergency shut-off is in the gauge valve. (except TUP-7 series)



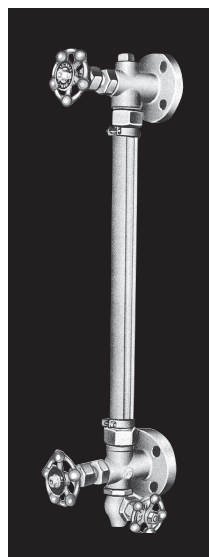
Protector



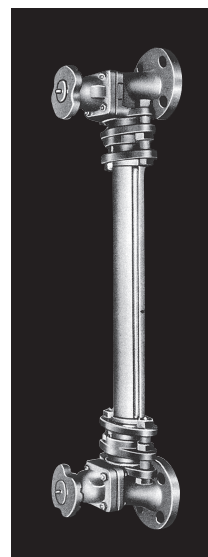
①



②



③



④

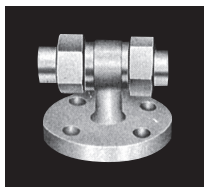
TYPE	① TUP-9C	② TUP-5B	③ TUP-6F TUP-64 TUP-66 TUP-66L	④ TUP-7R TUP-7G
MATERIAL	PVC	FC	CARBON STEEL SUS304 SUS316 SUS316L	FC/RL Natural hard rubber lining FC/GL Glass lining
V	C-165mm	C-140mm	C-150mm	C-220mm C-266mm
G	Φ19XΦ13	Φ19XΦ13	Φ19XΦ13	Φ25XΦ19
H		Approx. 80mm	Approx. 115mm Approx. 110mm Approx. 115mm Approx. 80mm	

C: Center-to-center for installation

V: Visible length

G: Outside dia. of glass tube

H: From gauge valve (lower) center to bottom end of drain valve



### Intermediary connector

In case center-to-center 2000mm and over, the tubular level gauge has intermediary connector. (in this case, the above dimension V is changed)